



# MOSS.

SERIES & PROJECTS

PRESS KIT



MOSS.

## TABLE OF CONTENTS

01.	Brand history and presentation	p.4
02.	Key figures	p.5
03.	Products and services	p.6
04.	MOSS SERIES	p.8-13
05.	MOSS PROJECTS	p.14-16
06.	Company values	p.18
07.	Distinctive features	p.19
08.	The brand's evolution	p.20
09.	Credentials	p.22

# 01. BRAND HISTORY AND PRESENTATION

Maison Moss was founded in 2005, in Normandy, under the impetus of artist and designer Isa Moss.

Passionate about light, technology and materials, Isa Moss developed her first brand of bespoke chandeliers, «Moss Projects».

Following several broadcasts on France 5 and Arte, demand for mass-produced lamps, floor lamps and chandeliers grows. A new brand, «Moss Series», based on the Maison Moss concepts, is created.

# 02. KEY FIGURES

**2005**

Creation of  
Maison Moss and  
the Moss Projects  
brand

**2006**

Artisan d'Art  
certification

**2021**

Creation of the Moss  
Series brand

**2022**

Winner of the  
Normandy Economy  
Trophy

**250**

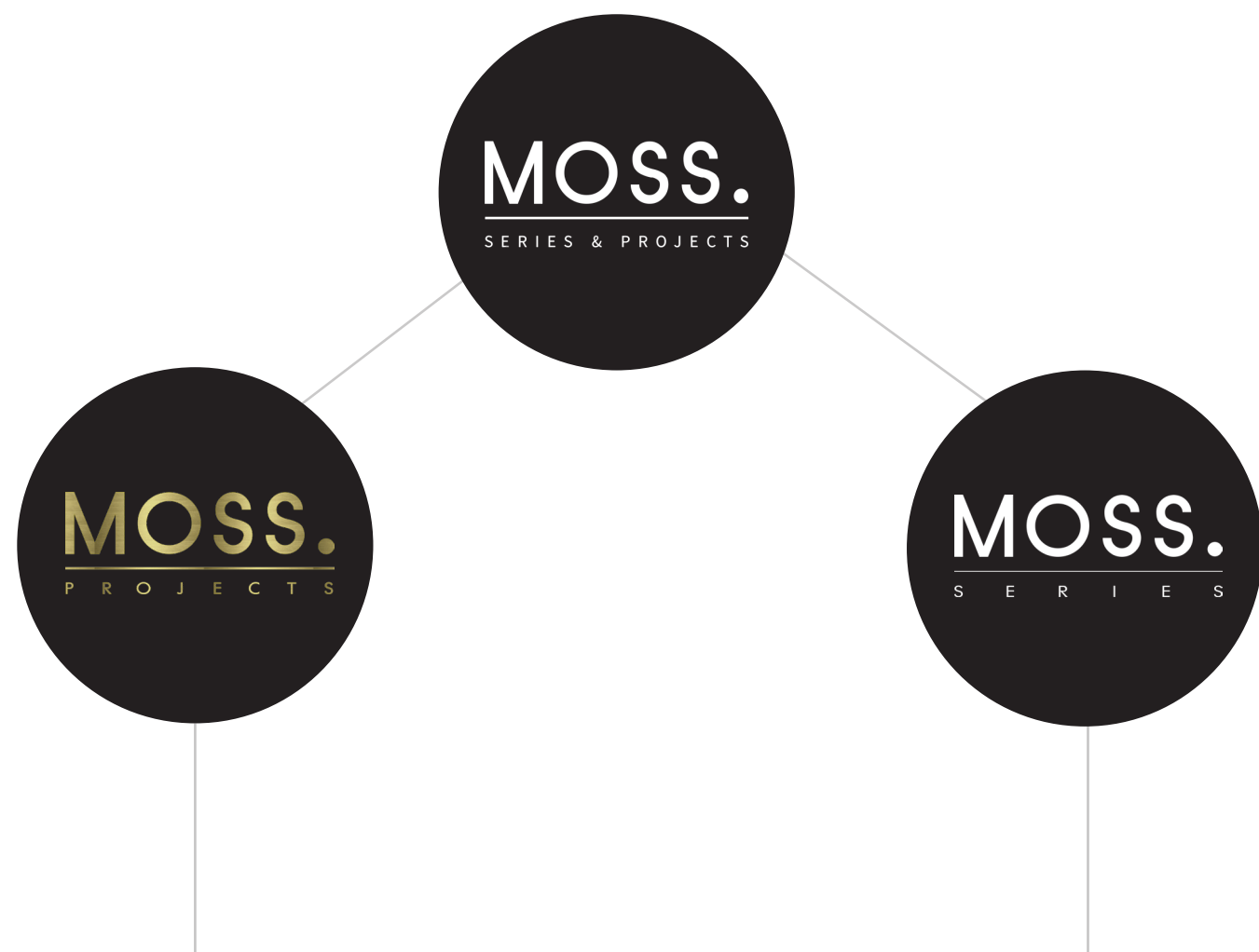
Projects

**50 000**

Glass blown per  
year

**15**

Countries



The «**Moss Projects**» bespoke brand offers monumental chandeliers perfectly suited to stairwells, reception halls...

From crystal, glass and aluminum to gold and carbon, «Moss Projects» chandeliers take on totally different appearances, while retaining their majesty accentuated by the light they emit.

Committed to the quality of its products and services, «Moss Series & Projects» also installs chandeliers, so you can be sure of a quality service that meets all your requirements.

[www.moss-projects.com](http://www.moss-projects.com)

The «**Moss Series**» range includes designer lamps, floor lamps, contemporary pendants, chandeliers with or without fiber optics, and wall sconces.

In love with light and what it transmits, the «Moss Series» brand doesn't hold back when it comes to proposing new combinations of materials, provoking unexpected and sumptuous plays of light on the material.

[www.moss-series.com](http://www.moss-series.com)

# MOSS.



## New Collection Attraverso

« When light shines through stone »



«Moss Series» comprises 5 lighting collections: lamps, floor lamps, pendants, chandeliers and wall sconces.

The brand-new «ATTRAVERSO» range of chandeliers and suspensions, based on a principle of accumulation, takes us on a journey through sparkling cascades of light, piercing through sandy, obscure, lactescent, amber or crystalline environments.

Attraverso's different combinations harmonize in spaces such as offices, dining rooms, living rooms and bedrooms, where the light seems to pass through the material to create a subtle, astonishing effect.





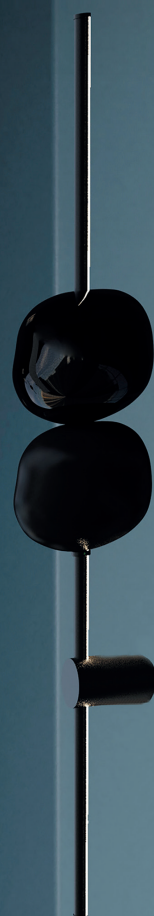
## New Collection Freccia

« This secret light from the dark »

The brand's very first wall sconce collection, «Freccia», combines nuance and refinement with its slender form.

Composed of a vertical line projecting a soft, bewitching light, Freccia is accompanied either by a stone softened by the ages, or by glassware so intensely black that the light nuances are barely distinguishable, or by glassware as milky as clouds, or even by translucent glassware that lets you glimpse the ballet of light on its walls.

These different textures offer an unsuspected spectacle when we think of the symbiosis created between light and matter.





# The G-Family



Collection G, composed of glassware filtering a light of gold and shadow or chrome and translucent, captivates with its shimmering reflections. The B Collection, myriad bubbles like a light cloud. Collection L, linear and reflecting simplicity. And the 30's Collection, inspired by the 30's with its crystal module for an elegant, immaculate result.



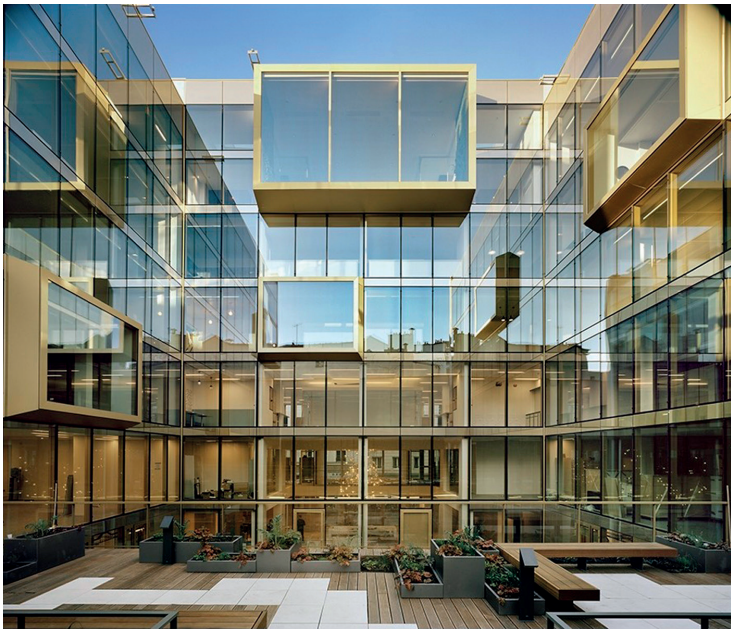


# 05. MOSS PROJECTS

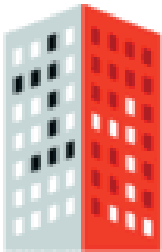
Among the various «Moss Projects», the project for a light sculpture in the Belvédère building at La Défense for Vinci Immobilier and in collaboration with architect Axel Schoenert stands out. This project was featured in Echoes in 2021 to present the «1 Immeuble, 1 œuvre» charter and work. Another atypical project was for the Bon Coin office headquarters at 22-24 rue des Jeuneurs in Paris.



BELVEDERE - Axel Schoenert Architectes



UFO - Le Bon Coin



1 immeuble  
1 œuvre



Projects for brands such as Paul Marius in Normandy, EMMA Pâtisseries in Nantes and Carlton Hôtel in Lyon also stand out.



PAUL MARIUS - Château de Belbeuf



MOSS.



## 06. COMPANY VALUES



All Moss Series & Projects products are handcrafted in the company's own workshops, employing rigor and precision. Using innovative technologies and materials. The company's intention is to offer creations that are gentle on the eye and in tune with the demands and requirements of its customers.

## 07. DISTINCTIVE FEATURES

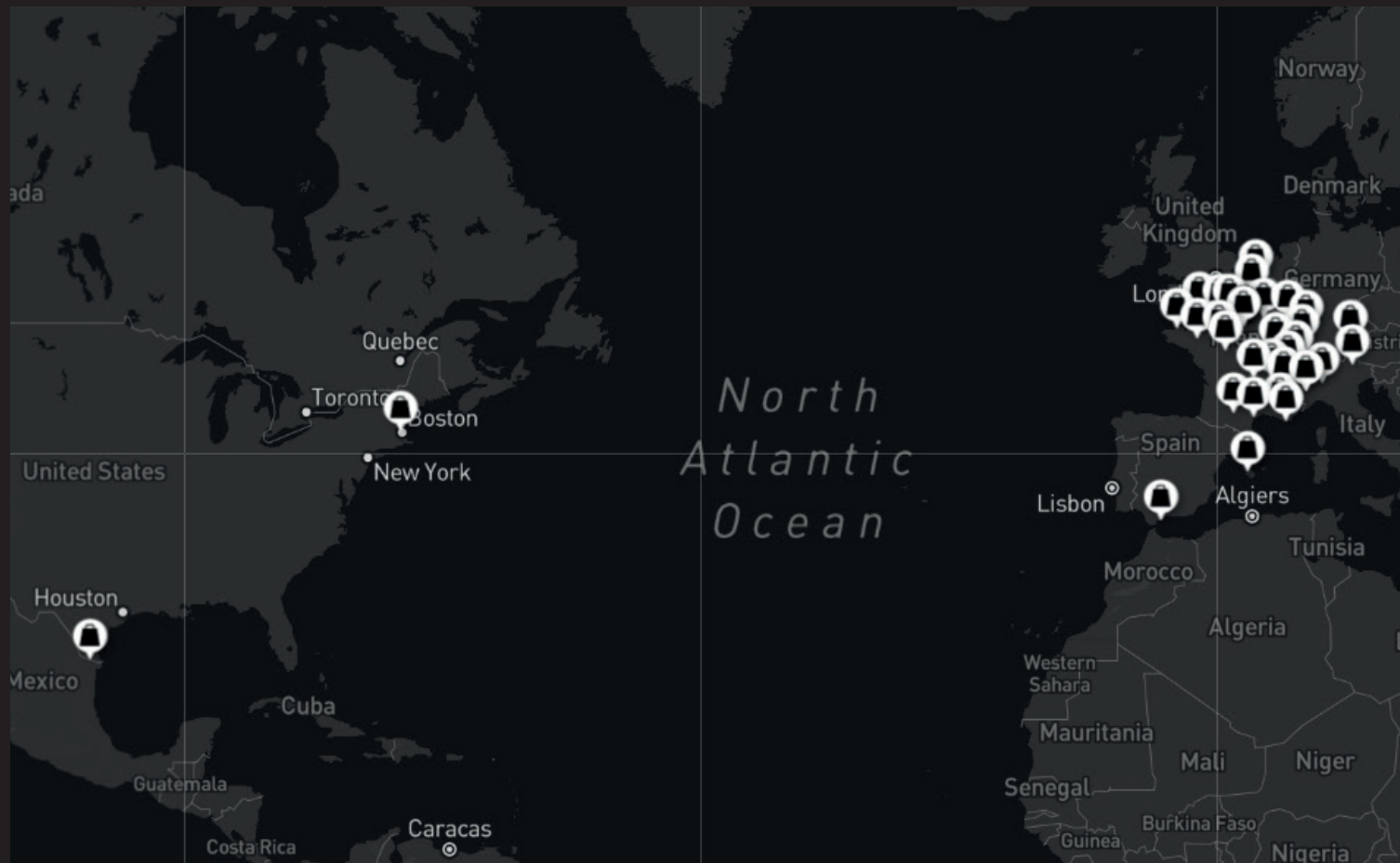
«Moss Series & Projects» has particular expertise in the field of chandeliers, with an acute knowledge of crystal and its derivatives. It has also been developing fiber optic chandeliers since its creation, and has brought this new trend to France.

The brand's motto is: «Bringing technicality and poetry together, without ever distorting the setting or ambiance of the room to be lit».





# 08. THE BRAND'S EVOLUTION



«Moss Series now has 36 points of sale worldwide.

As part of its dynamic development, Moss Series is adding a European account manager with experience in the luxury Made In France sector to its team, in order to continue to expand. He will be ready to welcome you at the Maison&Objet show in Villepinte in September.

Alpine Interiors, Araxon Interiorismo, Archiproducts, Architruc & Baltaz'art, Arrivet, Art & Lignes, Bergamote, Carré Lumière, Casa delle Lampadine, Césarini, De Bree Interieur, Designers Studio, Design & Solutions, Epokhe, Forma Design, Iconia Group, Jlp Bulbo, Interieur Actuel, Intérieur Privés, Inter-Faces, L'Atelier d'Eléonore, L'Atelier des Lumens, Les Tentureries, Maison Aur, Maison Roma, Okxo, Ouna, Pyramide, Quartz, Remo Stilhof, Santho, Stylish, Valtex



Zoom - Moss Series suppliers in Europe

# MOSS.



# 09. CREDENTIALS

ASA - Axel Schoenert Architectes – Paris – 2015 – 2016 – 2017- 2018 - 2019- 2020 -2021- 2022

Lvmh 2022

Paul Marius 2022 Siège Social

Legendre Construction 2020

Geccina 2020

Raiffeisen Immobilien 2020

Générali France Immobilier 2020

Ardian estate 2022

Agence DTACC Christian Sbeih 2021

Agence Vichniesvsky Cahuzac Architectes 2020 – 2021

Demathieu Bard 2021

Le siège social Le Bon coin 2020

Un immeuble une oeuvre nomination 2020

Boa Architecture 2020 2021

Groupe Spaces 2018

Vinci Immobilier construction Le Belvédère - La défense- 2018

Le domaine de Kaegy\*\*\*\* – Suisse 2017- 2018

Bnp real estate – Avenue Hoche – Paris – 2018

Hôtel Carlton\*\*\*\*\* – Lyon – 2012

Musée National de la Nacre – 2009 - 2018

Maison Saint Antoine – Maison médicalisée Haut de gamme – 2018

Hôtel l'Hermitage - Evian\*\*\*\*\* - 2018

Mezzarobba Monopole – Alsace 2017-2018

Hôtel Carlton\*\*\*\*\* – Lyon – 2012

L'hôtel de la Tabletterie\*\*\* - Oise – 2017

Siège social de Octo Technology – Avenue de l'Opéra – Paris – 2016

Covea Immobilier Siège – 2017

Groupe ACCOR – France – 2016

Groupe Retail Access – Paris - 2015

EHPAD – Les Jardins de Matisse – Le grand Quevilly – 2017

Bruyere SA – Brussels - 2015

Siège social CNIM – Rue de Bassano – Paris – 2016

Château d'Esches – Picardie – 2012

Agence d'un lieu à l'autre – Montreuil – 2013 – 2014 – 2015 – 2016- 2017- 2018 - 2019 -2020

Château d'Hénonville – Picardie – 2014

Agence Lecoadic-Scotto – Paris – 2015

Communauté de communes des Sablons – 2018

Mairie d'Esches – 2013

Château Hôtel de Belmesnil – Normandie – 2012

Agence Amélie Chauvet – Normandie – 2013 – 2014 - 2015

Agence Annie Mesmin – Paris – 2015

Le Brugmann – Bruxelles - 2015

Mairie d'Hénouville – 2015

Mairie de Maromme – 2016

Résidence privées France & Etranger